



# AUTOMATION

## PLUGINS FOR THE FISA MCU

### Indispensable tools for enhanced process control and faster ROI



### FTS – FISA TRACEABILITY SYSTEM

In order to meet your traceability requirements, we have developed a supervision system. The system relies on a database generated by the **MCU** (Machine Controller Unit), the programming and surveillance system of your cleaning machine.

The **MCU** stores data for up to 20 days of use. The compiled data can then be exploited via the 3 modules that make up:



For each plugin, there is a search engine tool in order to sort the database and narrow the search based on many criteria.

The plugins generate a .pdf file report that can be viewed and printed; however, all data can also be extracted and exported to an external application for further analysis or backup.

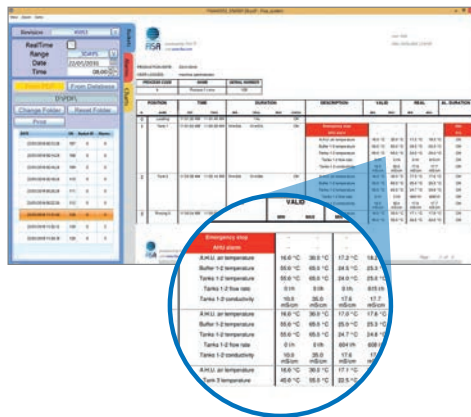
# AUTOMATION PLUGINS FOR THE FISA MCU

## FISA BA (BASKETS ANALYZER)

**FISA BA** allows you to monitor each basket that goes through the cleaning line.

It will build a report that contains the following key information:

- User ID,
- Process steps
- Timed sequence,
- Process code and description,
- Basket ID (production batch number, order number etc),
- Any alarms that may have been set off

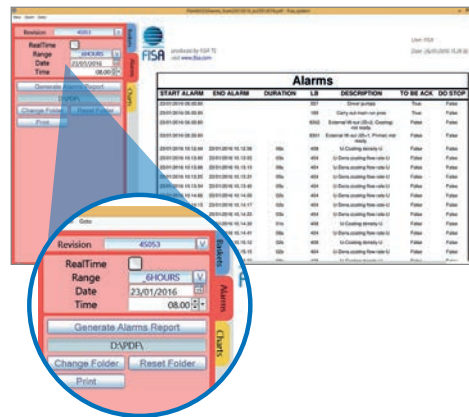


## FISA AA (ALARMS ANALYZER)

Information about all the alarms that have been set off is saved in the **MCU** database or on your server depending on your settings.

You can view a report that contains the following key information:

- User ID,
- Machine type and ID
- Duration of alarms
- Time ON/OFF
- If the machine stopped
- What needs to be done

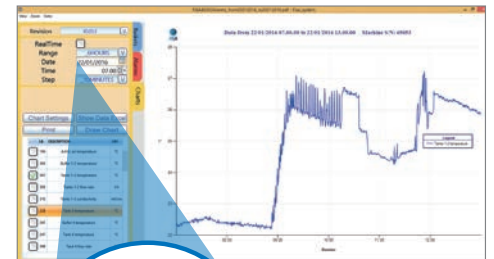


## FISA IA (INSTRUMENTS ANALYZER)

**Fisa IA** enables you to generate a graph for each parameter of the machine.

As a result you can draw a graph:

- for a single parameter
- to compare several parameters and
- select the length of time for the analysis
- select the sampling rate



Example of a graph for a specific instrument

## FISA PS (PRODUCTION SCHEDULER)

Using **FISA Production Scheduler** you can set your machine system to start/stop automatically.

You define on a recurrent basis for each day of the week at what time the machine should start up and turn ON heating, air exhaust, pumps...so it is ready when the operators come in.

In the same way you can decide

when you want the machine to stop. **FISA PS** automatically calculates at what time the robot should load the last basket into the machine. The heating will be switched off when the last programmed basket leaves the machine.

Of course you can make "exceptions" to take holidays, days off, winter opening hours etc into account.



## FISA MS (FISA MESSAGING SYSTEM)

The aim of **FISA Messaging System** is to inform up to 3 users that an alarm has been set off on their FISA Machine.

**FISA MS** can contact each defined user either by SMS or E-mail (using a network messaging system such as Exchange or a domestic network such as Gmail, Yahoo mail, etc).

The administrator can also configure

**FISA MS** based on the type of alarm that each user wants to be warned about (for example only red alarms that last for more than 15 minutes).

**FISA MS** can also send a message when the current alarm has disappeared in order to inform the specified user.

